

The Millennium Stars School and College

Rangpur Cantonment

Assignment 1-2020

Class: Ten

Subject: Biology

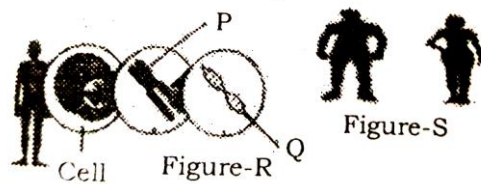
Group-A

Read the following stems and answer to the questions:

1. In the biology class the teacher said that in 1953 two scientists describe the model of a double stranded molecule. It formed of some chemical substances. He also said that this molecule can increase its number by a special type of process.

- a) What is CYSE? 1
- b) What do you mean by tissue culture? 2
- c) Explain the structure of the above mentioned molecule. 3
- d) Analyze the significance of the last line of the stem. 4

2.



- a) What is pyrimidine? 1
- b) Which diseases is the acquiring abnormal state of red blood cells? Explain. 2
- c) Explain the structure of 'Q' marked part of Figure-R. 3
- d) 'P' marked part plays an important role to determination of Figure-S. - Analyze it. 4

3.



P



Q



R

- a) What is saprophytic food chain? 1
- b) Why deer is called a heterotrophic animal? 2
- c) Explain the characteristic of the kingdom that the organism 'P' belongs to. 3
- d) Would the interdependence in between 'Q' and 'R' play any role in maintaining balance in environment?- Analyze. 4

4. Taking some lime water in a test tube Warusha gives blowing in it by the help of a plastic pipe. For this reason lime water becomes muddy.

- a) What is aerobic respiration? 1
- b) What is meant by standard blood pressure? 2
- c) Explain the reason for lime water becoming muddy in the stem. 3
- d) The gas come out from Warusha's blowing is responsible for global warming.- Analyze with logic. 4

5.



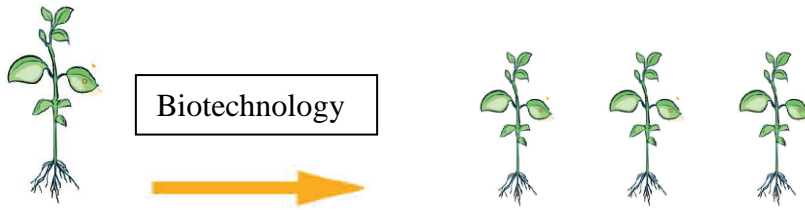
Fig:M



Fig: N

- a) What is lichen? 1
- b) Why are animals struggling to protect themselves? Explain. 2
- c) Draw a labeled diagram of the phases of Fig: N process in the stem. 3
- d) Analyze the successes of Fig:M and Fig:N process in agriculture. 4

6.



- a) What is TMGMV? 1
- b) What do you mean by gene cloning? 2
- c) What type of cell division is necessary to produce 'Y'? Discuss about the features of the division. 3
- d) Which producer is necessary to produce 'Y' from 'X'. – Analyze with proper diagram. 4

7.

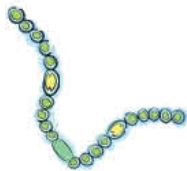


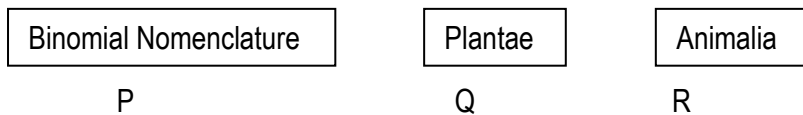
Fig: P



Fig: Q

- a) What is the scientific name of potato? 1
- b) In which Kingdom Amoeba belongs to? Why? 2
- c) Describe the characteristics of Fig: P according to the classification of Margulis. 3
- d) Maintains the economic importance of Fig: 'Q' in case of human life. 4

8.



- a) What is ICZN? 1
- b) Explain histology. 2
- c) Write the rules related to 'P'. 3
- d) Analyze the differences between 'Q' and 'R'. 4

9.

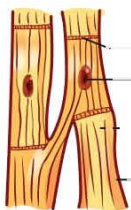


Fig: X

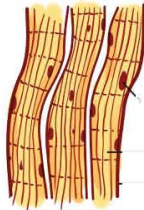


Fig: Y

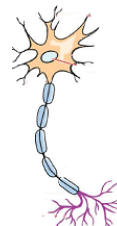
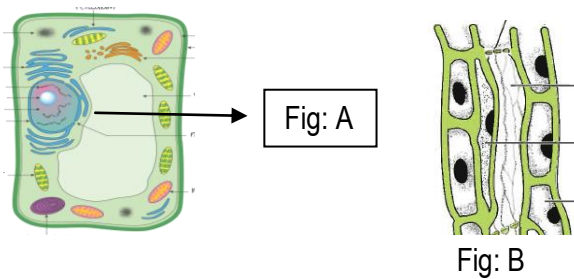


Fig: Z

- a) What is endocrine gland? 1
- b) Which tissue is called conducting tissue? Explain with causes. 2
- c) Explain the role of Fig: Z in living body. 3
- d) Which one is more effective in between Fig: X and fig: Y to active the living body? Aalyze. 4

10.



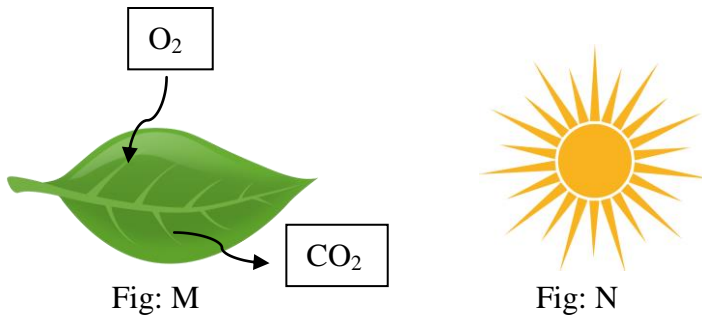
- a) What is eukaryotic cell? 1
- b) What do you mean by fluid of life? 2
- c) Describe the structure and function of 'B'. 3
- d) 'A has very complex structure'- Analyze with diagram. 4

11.

P	Chromosome number remains equal
Q	Chromosome number becomes half

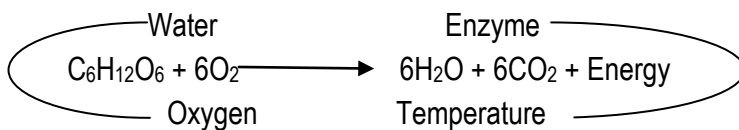
- a) What is called nucleotide? 1
- b) Which organelle is called the protein producing factory? Explain. 2
- c) Draw the labeled diagram of the phases of karyokinesis of 'P' type of division. 3
- d) "Both 'P' and 'Q' type of divisions are essential for the living organism"- Evaluate. 4

12.



- a) What is biological currency? 1
- b) Explain the role of photosynthesis in a newly developed leaf. 2
- c) In the physiological process shown in the stem above 'M' describe the stage of it which occurs in the cytoplasm of each cell. 3
- d) The presence of 'N' mentioned in the stem above "M" continues the anabolic physiological process in it.- Analyze it. 4

13.



- a) What is interphase? 1
- b) What is meant by cartilage? 2
- c) Energy will reduce in the process of stem.- Prove it with experiment. 3
- d) 'For happening the reaction of the stem is there any influence of other elements except the equation? Write your opinion with logic. 4