

The Millennium Stars School and College

Rangpur Cantonment

Assignment –2020

Class: Eight

Subject: Science

Subject Code: .101

1. Read the following stems and answer of the question:



Fig-A



Fig-B



Fig-C

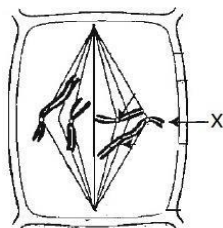
- a) What is called coelenteron? 1
- b) Why frog is called amphibia? 2
- c) Explain the characteristics of fig-A. 3
- d) Though fig-B and fig-C both can fly, they are of different phylum.-Analyze. 4

2.

Column A	Column B
Hilsa	Earthworm
Frog	Prawn
Lizard	Starfish

- a) Write down the scientific name of man. 1
- b) What do you mean by binomial nomenclature? 2
- c) Write down the economic importance of the animal of column 'B' which belongs to the largest phylum. 3
- d) "The animals of the column A belong to the same phylum but not to the same class"- Analyze the statement. 4

3.



- a) What is interphase? 1
- b) Why the cell division of bacteria is called direct cell division? 2
- c) Explain the next phase of the phase mentioned in above stem. 3
- d) How **X** restores the individuality of every species? Analyze. 4

4. **X: Starting of Karyokinesis.**

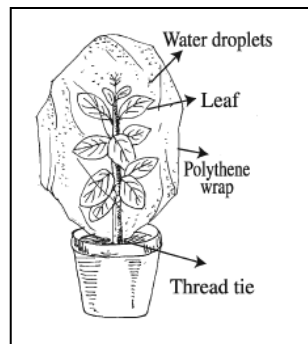
Y: Chromosome divides once, nucleus divides twice.

- a) What is Cytokinesis. 1
- b) Why is the cell division in the ovary of a flower called the reductional division? 2
- c) Explain the phase-X. 3
- d) How the hereditary trait is maintained by "Y"? Analyze it. 4

5.

Morgan's friend brought some roses on his birthday. Morgan's house filled with the fragrance of rose. His mother made paies on that occasion by using raisins.

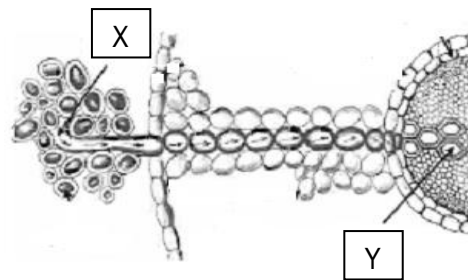
Situation-1



Situation-2

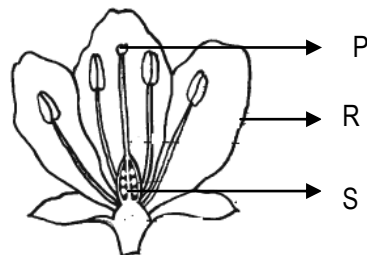
- a) What is called imbibition? 1
- b) Why polythene is an impermeable membrane? 2
- c) Explain the process of situation-2. 3
- d) Is it plays the same role in plant that explain the two incident occurs in the situation-1. –Analyze. 4

6.



- a) What is diffusion pressure? 1
- b) Dry wood is hydrophilic- Explain. 2
- c) Describe the process that begins at 'X' and continues through 'Y'? 3
- d) 'The normal growth of a plant greatly depends on 'X'- Justify the comment. 4

7.



Figure

- a) What is inflorescence? 1
- b) What do you mean by tuber? 2
- c) How ovule produces by 'S' marked part in the above figure? 3
- d) Between 'P' and 'R' which one is directly involve for pollination? 4

8.



Fig:A



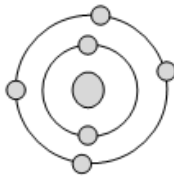
Fig: B

- a) What is cross pollination? 1
- b) Shimul is animal pollinated flower- Explain. 2
- c) Explain the formation of Fig:B. 3
- d) Compare the germination between two Fig. that mentioned in the stem. 4

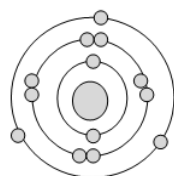
9. For an element 'M' the atomic number is 11 and the mass number 23. The another element 'N' in which electrons number is 17 and mass number is 35.

- a) What is radioactive isotope? 1
- b) What do you mean by $2n^2$? 2
- c) Calculate the neutrons number of the element 'M'. 3
- d) Explain the ionic bond formation of the compound produced by the elements 'M' and 'N'. 4

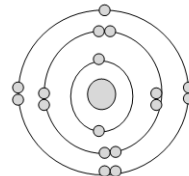
10.



X



Y



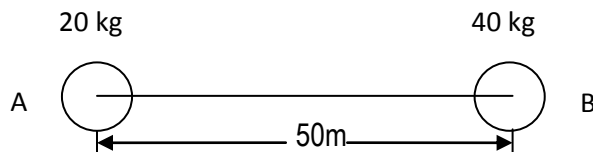
Z

- a) What is formula? 1
- b) 'The mass number of sodium is 23' – what does it mean? 2
- c) Explain the isotope of 'X' element. 3
- d) How cab the two elements 'Y' and 'Z' gains their stability? Analyze. 4

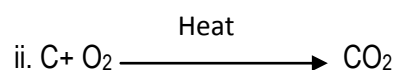
11. $m = 60 \text{ kg}$ and $g = 9.8 \text{ m/sec}^2$.

- a) What is mass. 1
- b) What is meant by acceleration due to gravity? 2
- c) Determine the weight of the object. 3
- d) 'The weight of the object mentioned in the stem is not same at the surface of the Earth in different places.' - Analyze this statement. 4

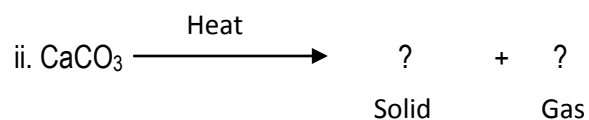
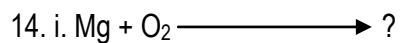
12.



- a) What is gravitation? 1
- b) Why all gravity is not gravitation? 2
- c) Determine the attraction force between object A and B in the above stem. 3
- d) If the mass of object A becomes 4 times and the distance between object A and object B becomes half, then what will be the attraction force between A and B? 4



- a) What is lime water? 1
- b) Why is methane not an acid? 2
- c) What type of number (i) reaction is? Explain. 3
- d) Is the reaction number (ii) of both addition and combustion? Analyze. 4



- a) What is chemical equation? 1
- b) What do you mean by formula? 2
- c) Complete the equation (i) of the stem with balance. 3
- d) What type of reactions of the equation (i) and (ii) of the stem? Give your comment with logic. 4